

THIS MOTOR IS FOR ZIP SCREEN APPLICATION AND SIMILAR.

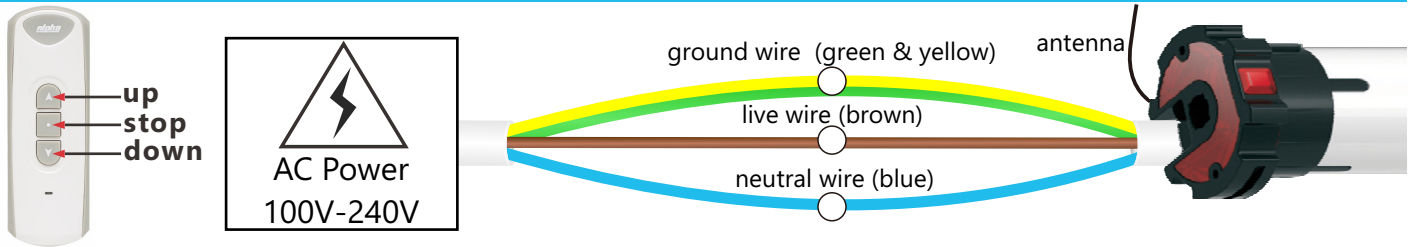
1. TECHNICAL SPECIFICATIONS

Power AC 240V/50Hz
Protection Index: IP44
Received Frequency: 433.92MHz
Code: Rolling

Up to 15 remotes (or channels) may be assigned to each motor.

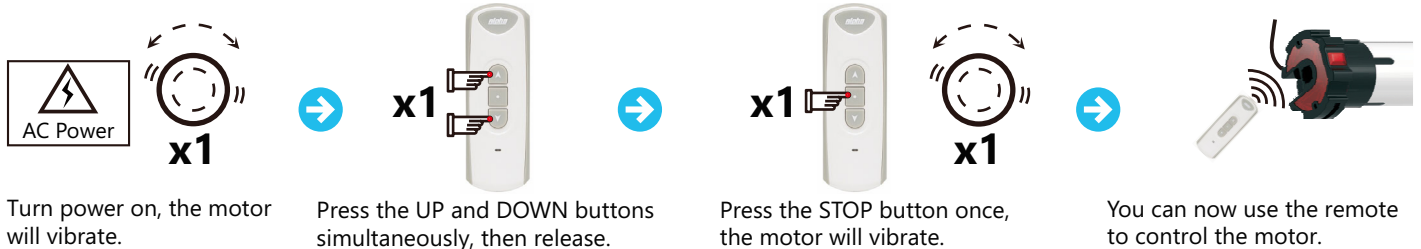
NOTE: Default rotational speed is 17rpm. For a speed of 28rpm, follow the operation instructions to increase to max speed, but torque will be correspondingly reduced to 10Nm.

2. WIRE CONNECTIONS

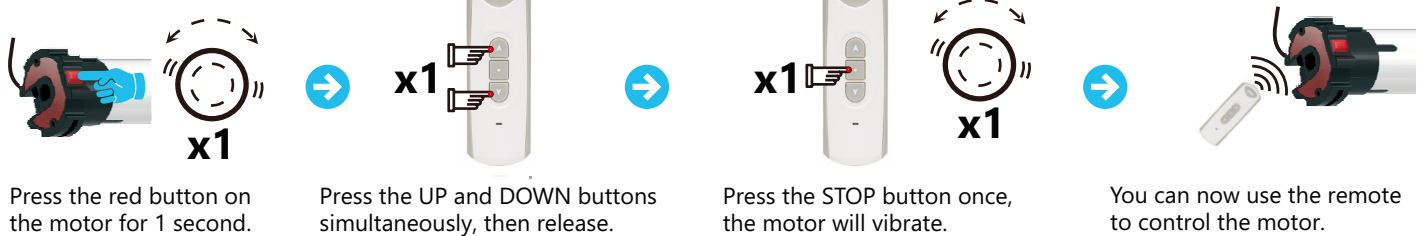


3. ASSIGNING A REMOTE TO A MOTOR (you have 10 seconds to complete the task)

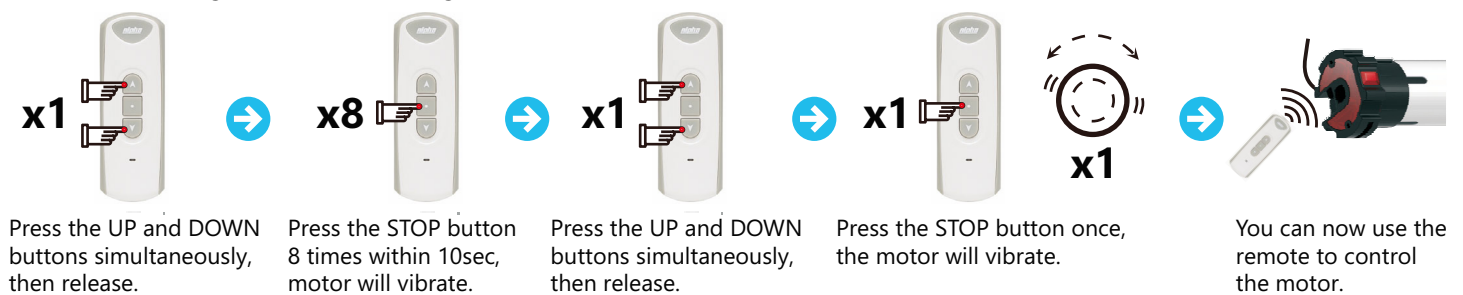
Method A. Only works for the first remote assigned to the motor.



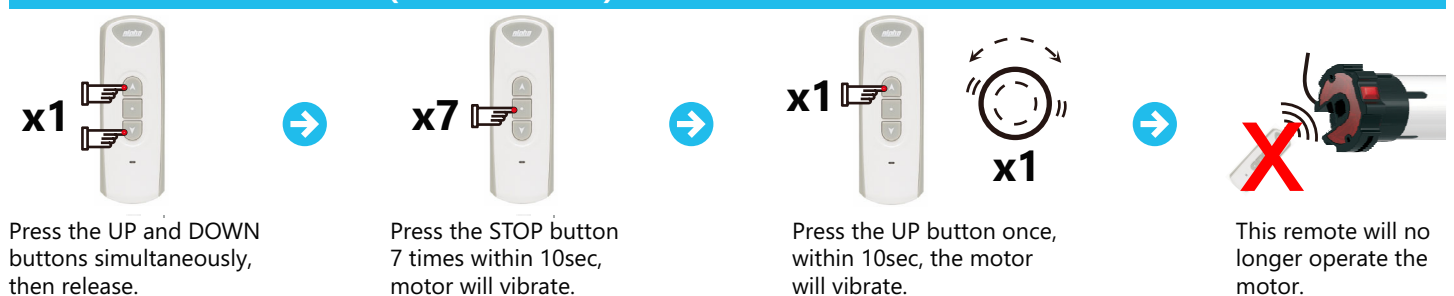
Method B. Can be used at any time.



Method C. Assign extra remote via original. *Can only be used again if you cut and restore to the motor 3 times. Allow 5sec before restoring power.*



4. DELETING A REMOTE (OR CHANNEL) FROM A MOTOR



NOTE: To delete coding from all remotes & sensors, press the STOP button 6 times within 10sec, motor will vibrate.

5. CHANGING A MOTOR'S DIRECTION

Method A.

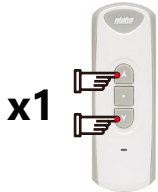


Hold the red button on the motor down for 3 seconds, the motor will vibrate.



The UP and DOWN directions of the motor have been reversed.

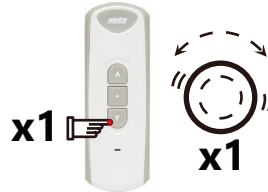
Method B.



Press UP and DOWN buttons simultaneously, then release.



Press the STOP button 6 times.

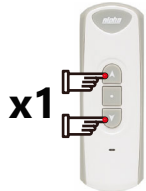


Press the DOWN button once, the motor will vibrate.



The UP and DOWN directions of the motor have been reversed.

6. TURN ON "STEP BY STEP" MODE (motor moves a few millimeters at a time unless button held down for 3 secs)



Press UP and DOWN buttons simultaneously, then release.



Press the STOP button once within 10sec.

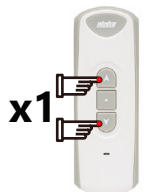


Press the UP button once, the motor will vibrate.



The motor is now in "step by step" mode.

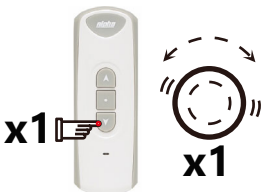
7. TURN OFF "STEP BY STEP" MODE (motor will run up and down as normal)



Press UP and DOWN buttons simultaneously, then release.



Press the STOP button once within 10sec.



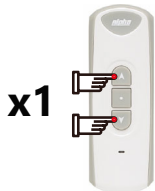
Press the DOWN button once, the motor will vibrate.



The motor will now run normally.

8. LIMIT SETTING (first move the screen to the desired top/bottom limit position)

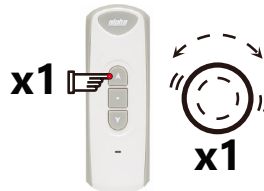
Setting the TOP limit



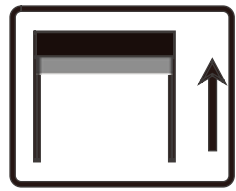
Press UP and DOWN buttons simultaneously, then release.



Press the STOP button twice within 10sec.

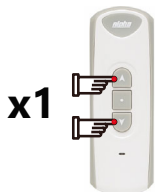


Press the UP button once, the motor will vibrate.



Top limit is now set.

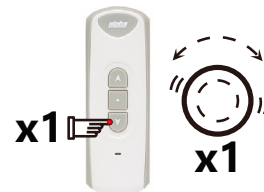
Setting the BOTTOM limit



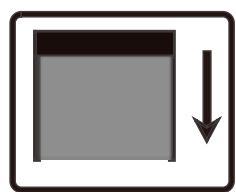
Press UP and DOWN buttons simultaneously, then release.



Press the STOP button twice within 10sec.



Press the DOWN button once, the motor will vibrate.



Bottom limit is now set.

9. DELETING THE TOP LIMIT

x1 Press UP and DOWN buttons simultaneously, then release.

x4 Press the STOP button 4 times.

x1 Press the UP button once, the motor will vibrate.

Top limit is deleted.

10. DELETING THE BOTTOM LIMIT

x1 Press UP and DOWN buttons simultaneously, then release.

x4 Press the STOP button 4 times.

x1 Press the DOWN button once, the motor will vibrate.

Bottom limit is deleted.

11. SETTING THE THIRD LIMIT (midway position, somewhere between top and bottom limits)

x4 Press the STOP button 4 times when the motor stops at the desired position.

x1 The motor will vibrate.

x1 Hold down for 2 seconds

Holding down the STOP button for 2 seconds will send the motor to the third limit position.

CHANGING THE THIRD LIMIT - Move the blind to the desired third limit position and use procedure above.
NOTE: The third limit will be deleted automatically if either the top or bottom limits are deleted.

12. ADJUST MOTOR SPEED

x1 Press UP and DOWN buttons simultaneously, then release.

x5 Press the STOP button 5 times precisely, otherwise limits may be deleted.

x1 Press UP or DOWN button once to increase or decrease speed, the motor will vibrate. The number of vibrations stands for different speeds. It's 5rpm/m difference between two speeds.

xN N=1: 17rpm
N=2: 20rpm
N=3: 28rpm

NOTE: Always roll blind down and up to check if top and bottom limits are there after you change the motor speed. If any limits are gone, reset limit. Speed adjustment will need to be repeated.

13. HANDY TIPS

- The RE101 remote has been used as an example here in diagrams. All remotes are compatible with these motors. If you are using a multi-channel remote, make certain that it is on the correct channel before you assign it to a motor. This is a common mistake.
- Strong local RF levels from other equipment may affect some setup functions. If a step fails, simply repeat the process.
- The control unit is of high voltage. Please do not place it in humid atmosphere.
- Children should be supervised to ensure that they do not play with the appliance.
- Ambient temperature: -10°C+55°C.

MAINTENANCE AND PRECAUTIONS

- During transportation and use, collisions, hits, knocks, etc. should be avoided, and external impact forces should not be applied to the motor output shaft and bearings.
- When replacing the motor, prevent it from falling, and do not exert more than 50Nm of force on the housing.
- This motor must not be used in corrosive environments or places with flammable and explosive materials.
- Non-professionals of the company are not allowed to disassemble and replace the parts of the motor, and they are not allowed to assemble it again after disassembly. Do not disassemble the motor while the power is on.

14. RESTORE FACTORY SETTINGS (deletes all remotes and up/down limits)



Press and hold for 10 seconds, the motor will vibrate twice, release the button to restore to factory settings.

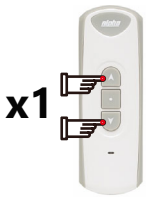
15. OBSTACLE DETECTION FUNCTION (SHORTENED AS OD FUNCTION)

The motor's obstacle detection function is only available after the motor's TOP and BOTTOM limits are set, but this function is not available 10cms above the BOTTOM limit. This is to make sure the screen can be fully closed.

It is not workable if the motor is set at "step by step" mode.

The OD function is turned on by default. You can use assigned remote to switch OD function between on and off.

Turn on OD function



Press UP and DOWN buttons simultaneously, then release.

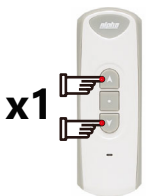


Press the STOP button 3 times, then release.



Press the UP button once and release, the motor will vibrate to confirm OD function is turned on.

Turn off OD function



Press UP and DOWN buttons simultaneously, then release.



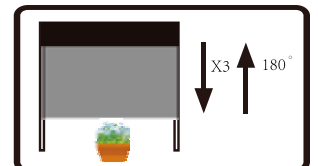
Press the STOP button 3 times, then release.



Press the DOWN button once and release, the motor will vibrate to confirm OD function is turned off.

OD function application - Make sure TOP and BOTTOM limits are set. Remote's DOWN button moves screen downward.

A. During motor running downward, every time it detects obstacle, the motor will stop running down but run upward for 180 degrees, then run downward again. If it detects obstacles three times at the same position (position difference less than 6cm), the motor will run upward for 180 degrees and stop running.



B. During motor running downward, every time it detects obstacle, the motor will stop running down but run upward for 180 degrees, then run downward again. If it detects obstacles three times at different positions (position difference bigger than 6cm), the motor will run upward to TOP limit.

